

Immigrants as Assets

Denzil Mohammed

Director, Public Education Institute,
The Immigrant Learning Center, Inc.,
Malden, MA

dmohammed@ilctr.org

**Type the place or places where
your family comes from.**

When you think of your
family's immigration story,
what words come to mind?

Think of a time that you moved
(to a new school, town, country,
etc.). **How did you feel?**



YESSY FELIZ
Owner
Tails, Jamaica Plain
From Dominican Republic

▶ | 🔊 0:06 / 3:08

<https://youtu.be/7KaOBWYhz60?t=7>



What are some of the things that stood out to you?

Commonalities

Differences

Strengths

Shared values

Life experiences



The Immigrant Learning Center (ILC)

- 1992: The ILC started to provide free English classes for foreign-born adults.
 - More than 11,000 to date
- 2003: The ILC Public Education Institute is established through the vision of Founder and CEO Diane Portnoy (pictured at right) to counter anti-immigrant sentiments.



The ILC Public Education Institute

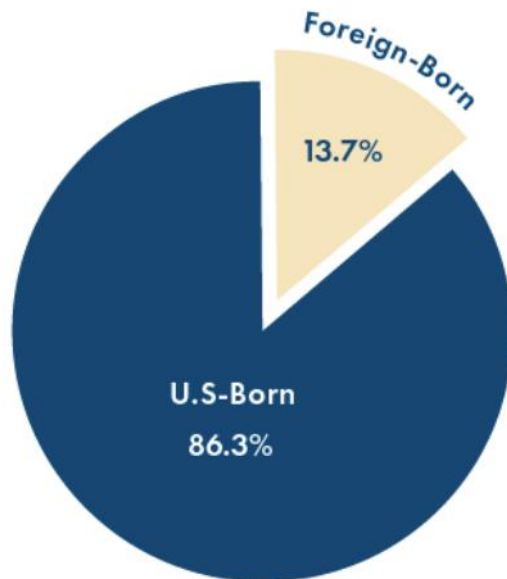


- Started in 2003 to tell the other side of the story
- Commissioned research to develop credible, alternative narrative
- Eleven studies to document economic and social contributions
- Inform policy, media, public, field
- Institute for Immigration Research at George Mason University

How many immigrants are there in
the United States?

There are about **44.7 million** immigrants in the U.S.

About one in every eight U.S. residents (13.7%) is foreign-born.

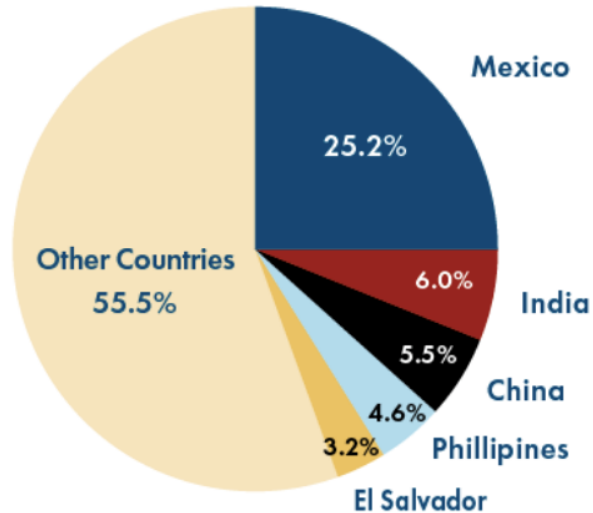


Source: U.S. Census 2018 American Community Survey

Where do these immigrants
come from?

All Over the World!

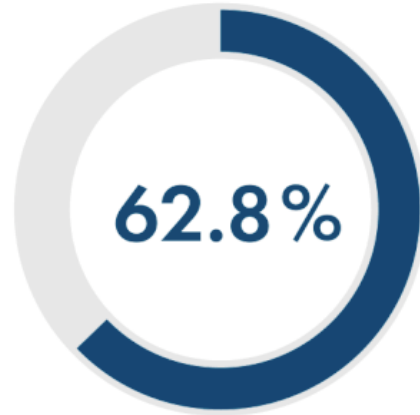
The five largest immigrant populations in the United States are from:



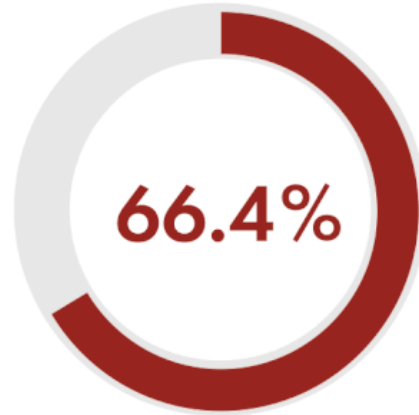
Source: U.S. Census 2017 American Community Survey

How do immigrants make the
U.S. stronger?

Immigrants are More Likely to Work

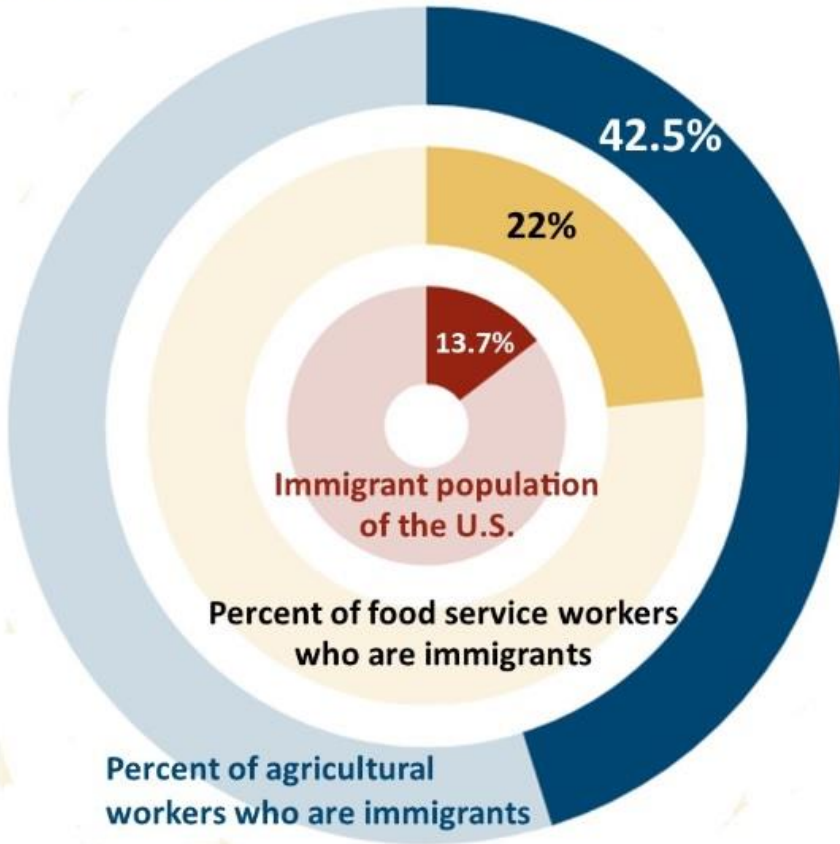


US-Born

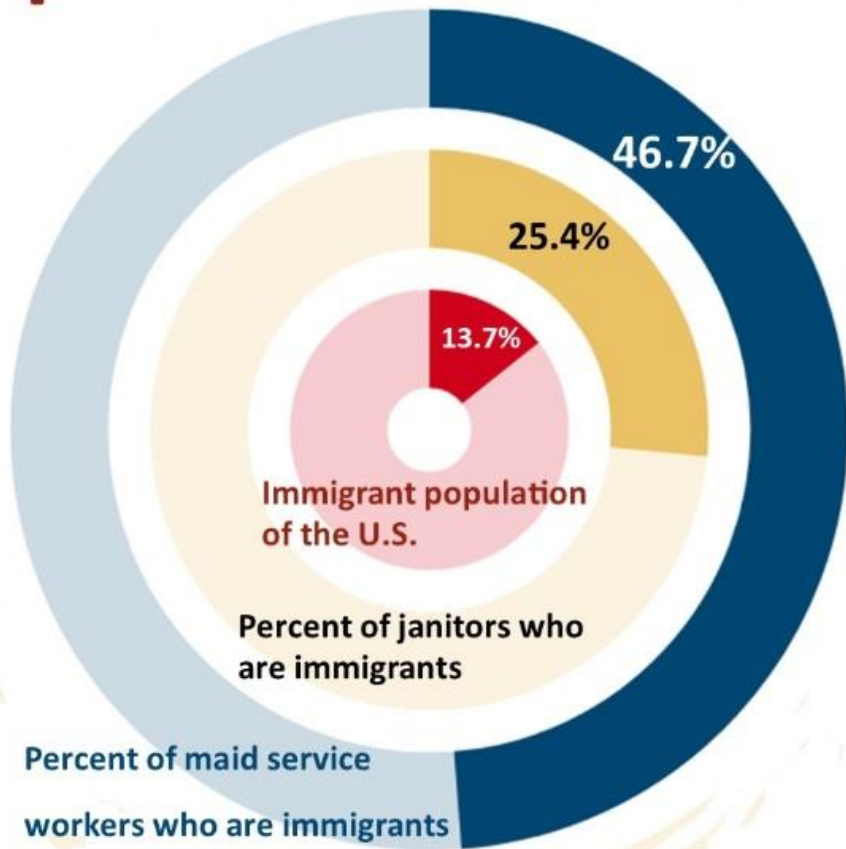


Foreign-Born

Immigrants Feed America



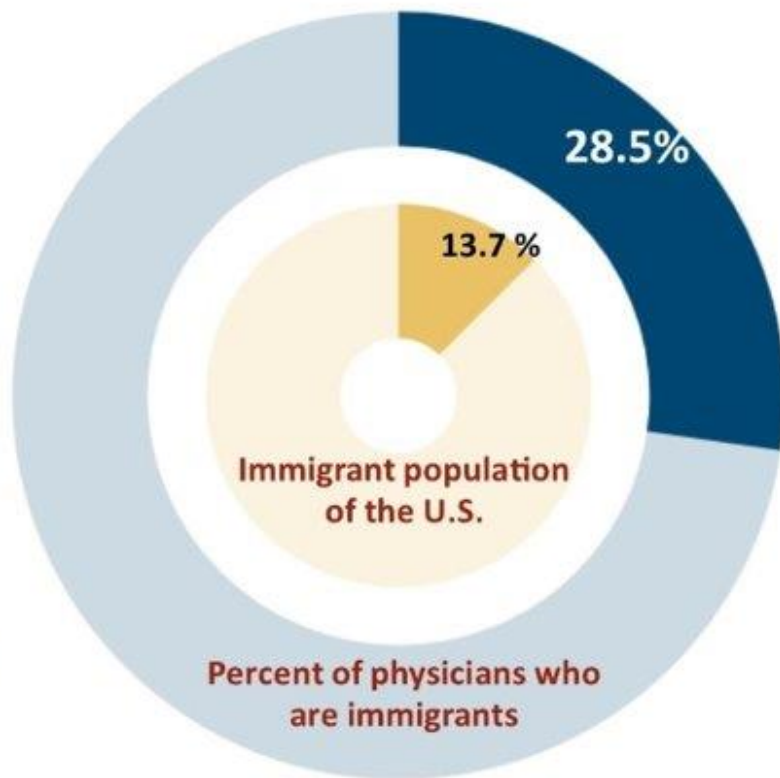
Immigrants Keep America Clean



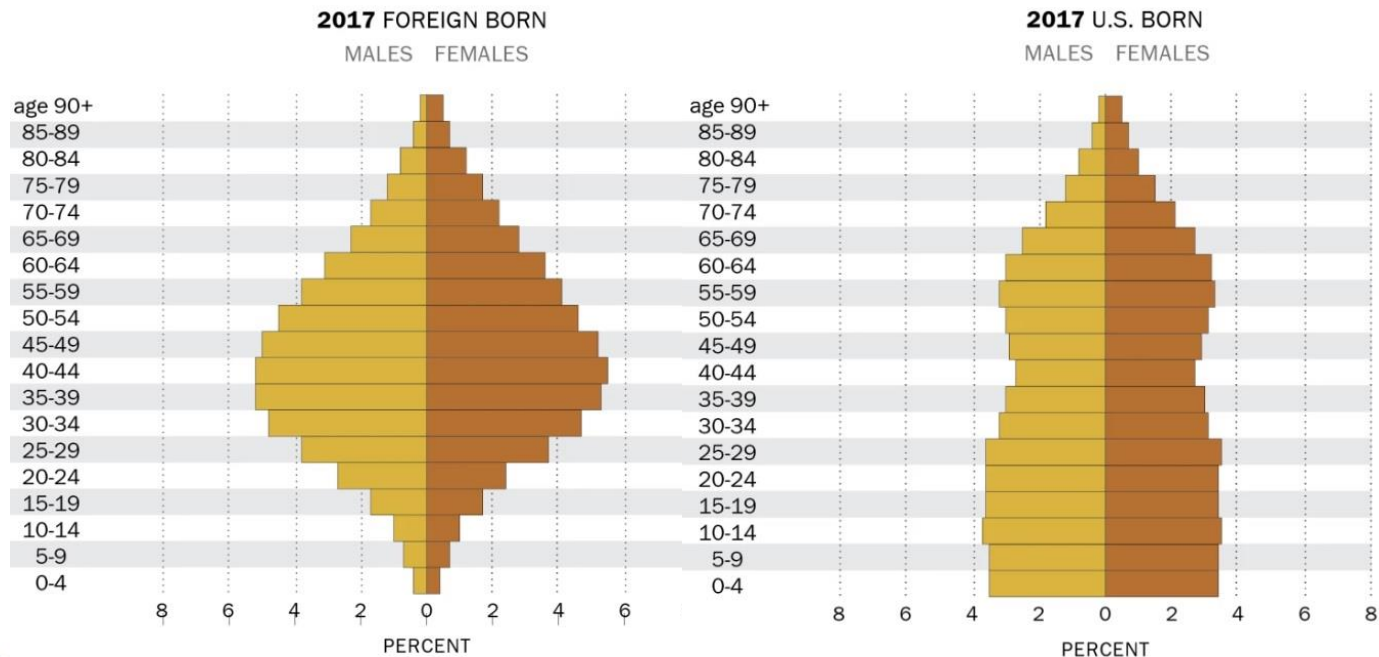
The Immigrant Learning Center

Source: David J. Bier, CATO Institute, "Immigrants Aid America During COVID-19 Crisis," March 23, 2020.

Immigrant Doctors Fight COVID-19



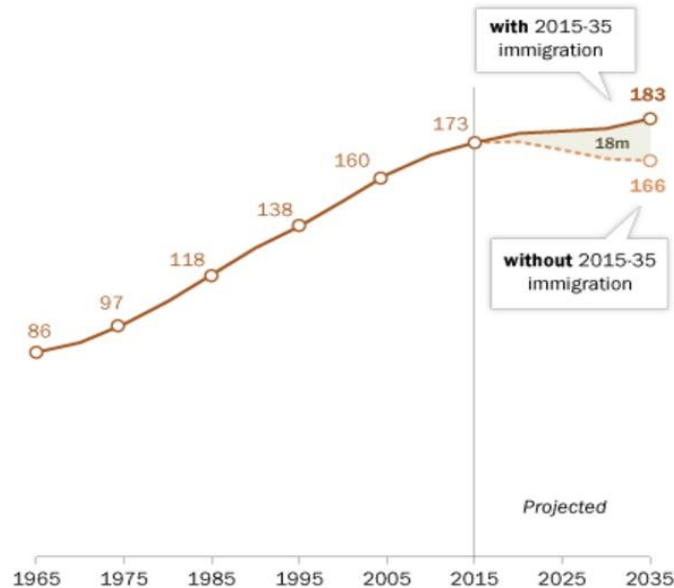
Immigrants and the labor force



Immigrants and the labor force

Without future immigrants, working-age population in U.S. would decrease by 2035

Working-age population (25-64), in millions



Source: Pew Research Center, "Immigration projected to drive growth in U.S. working-age population through at least 2035," 2017

Immigrants help our cities and
neighborhoods grow and
recover from hard times

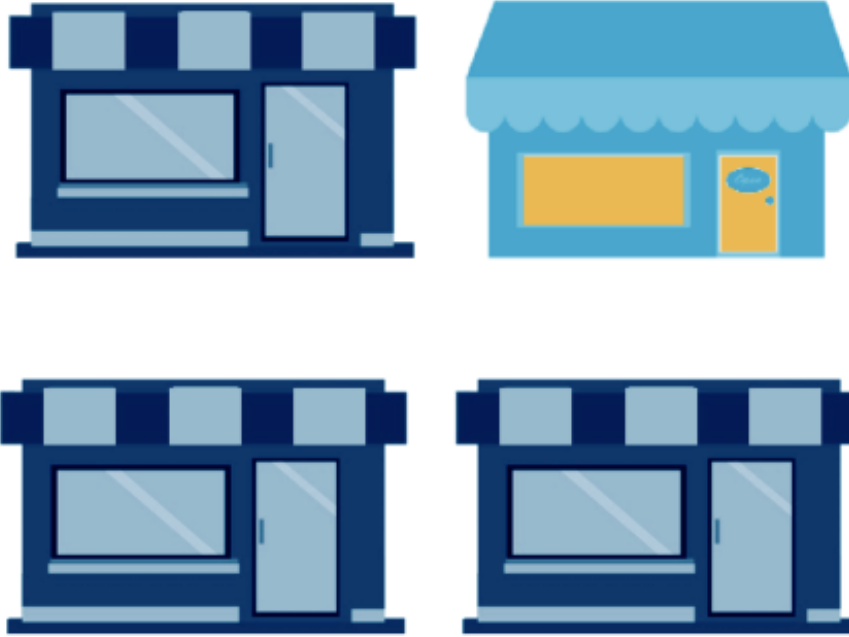






Immigrants are more likely
to start businesses

One quarter (25%) of new U.S. businesses are founded by immigrants

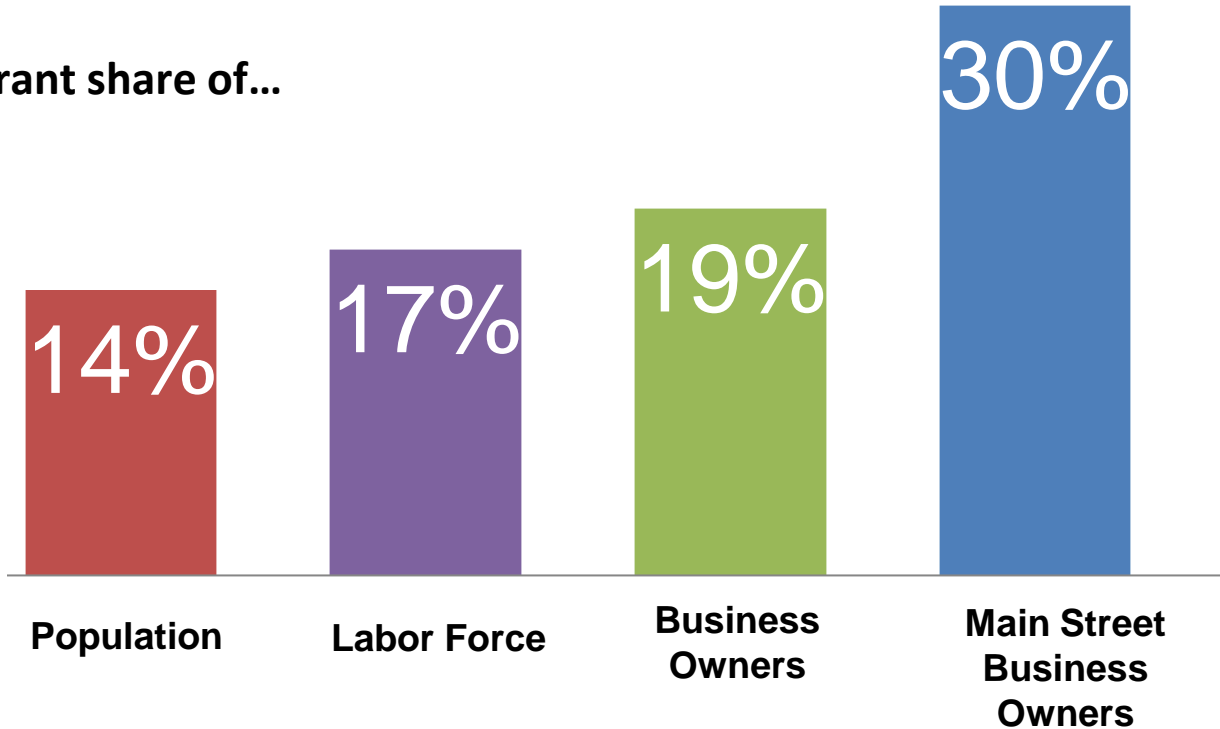


Immigrants are Job Creators and Innovators



Immigrants and Entrepreneurship

Immigrant share of...







Bridging Divides in the Immigration Debate

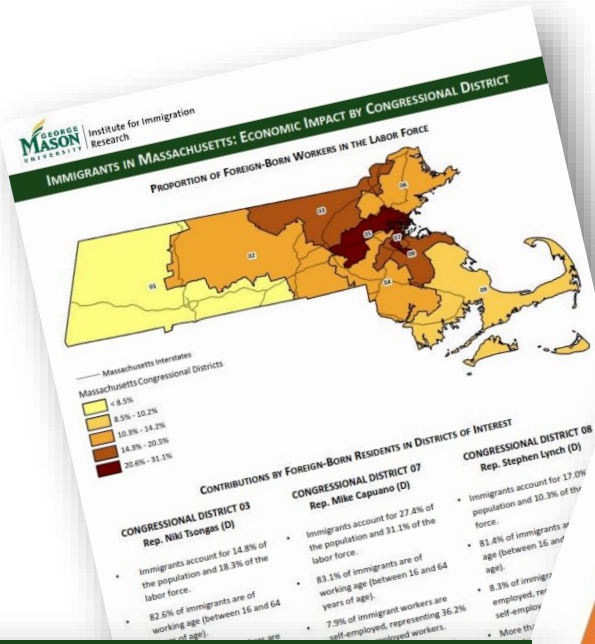
- Anti-immigrant sentiment in the U.S. is more passionate than pro-immigrant sentiment
 - Of the Americans who consider immigration the most important voting issue, far more oppose immigration than support it.
- The two extremes (left and right) are increasing in size, the “middle” is fast decreasing.
- The politically disengaged tend to veer right

Bridging Divides in the Immigration Debate

- For change to take place, we need to connect with other Americans
- Find ways to build broad, diverse, local support bases
- Go back to the basics, and connect with values, issues and humanity

What can you do?

- Get informed, know the facts
- Share stories about immigrants you know or know of
- Keep spreading these messages over and over
- Always start with the facts – never repeat the myths
- Remember what you post or comment on online will be seen by more than just who you're talking to



CONTRIBUTIONS BY FOREIGN-BORN RESIDENTS IN DISTRICTS OF INTEREST

CONGRESSIONAL DISTRICT 03
Rep. Niki Tongas (D)

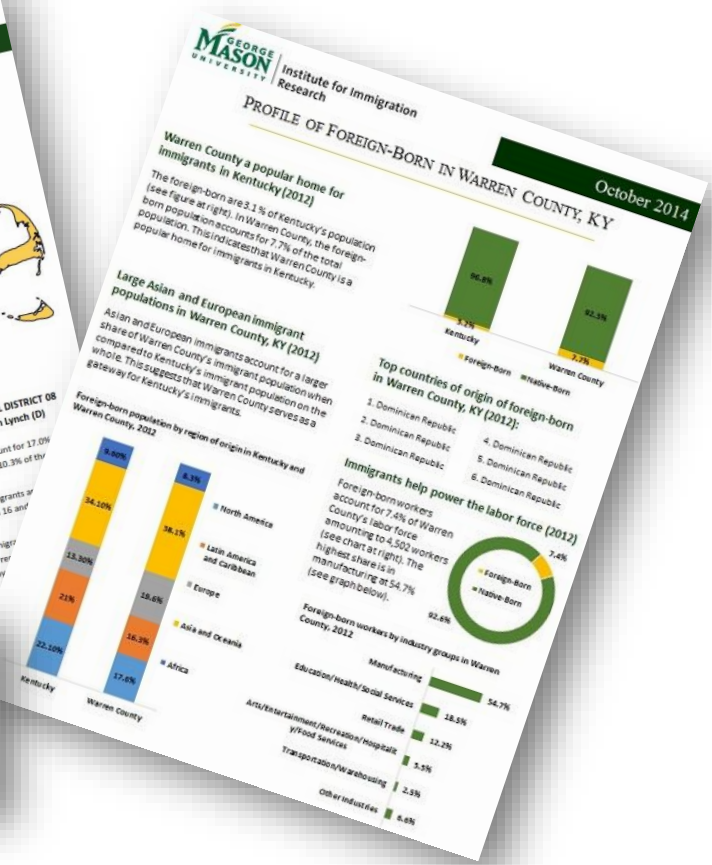
- Immigrants account for 14.8% of the population and 18.3% of the labor force.
- 82.5% of immigrants are of working age (between 16 and 64 years of age).

CONGRESSIONAL DISTRICT 07
Rep. Mike Capuzzo (D)

- Immigrants account for 27.4% of the population and 31.1% of the labor force.
- 83.1% of immigrants are of working age (between 16 and 64 years of age).
- 7.9% of immigrant workers are self-employed, representing 36.2% of self-employed workers.

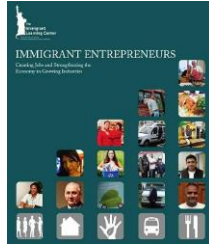
CONGRESSIONAL DISTRICT 08
Rep. Stephen Lynch (D)

- Immigrants account for 17.0% population and 10.3% of the labor force.
- 81.4% of immigrants are of working age (between 16 and 64 years of age).
- 8.3% of immigrant workers are self-employed, representing 36.2% of self-employed workers.
- More than 10% of immigrants are self-employed.



Institute for Immigration Research at GMU:
iir.gmu.edu/idod

Thank You



Learn how to change the immigration conversation at www.ilctr.org/promoting-immigrants



Immigration Research
and Information

Online library of >1,000 immigration reports:
www.immigrationresearch.org

Request free, customizable fact sheets from
<http://iir.gmu.edu/>

dmohammed@ilctr.org

